

INDIGENOUS LAND USE AGREEMENT

Tagalaka People and Croydon Shire Council ILUA

-  Agreement Area
-  Local Government Authority boundary

Map created by: Geospatial Services, National Native Title Tribunal (04/01/2013)

Agreement Area boundary data compiled by NNTT.

Local Government Authorities data sourced from Department of Natural Resources and Mines, Qld (August 2012).

Non-Freehold data sourced from Department of Natural Resources and Mines, Qld (August 2012).

Topographic vector data is © Commonwealth of Australia (Geoscience Australia) 2006.

© Commonwealth of Australia 2013

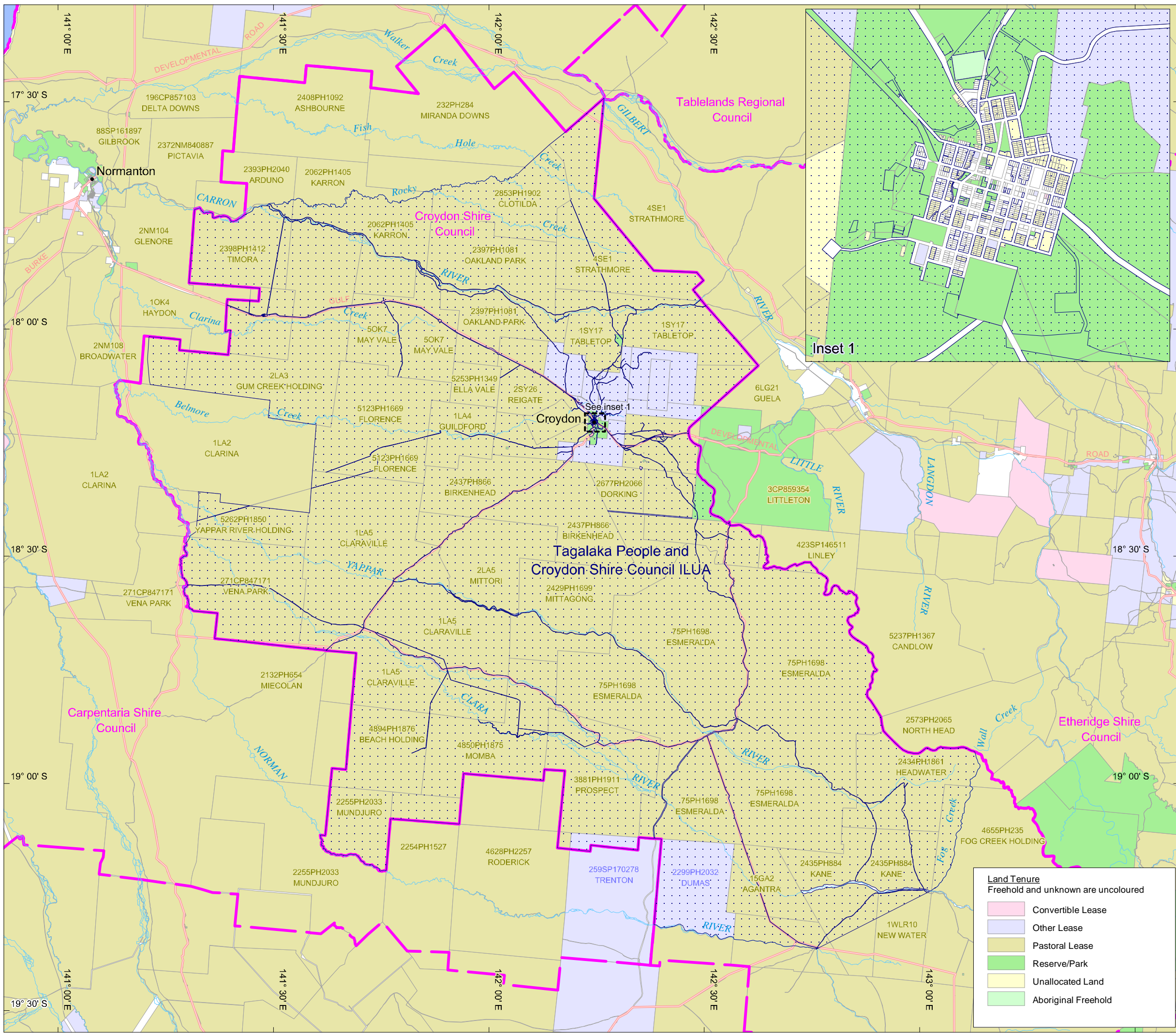
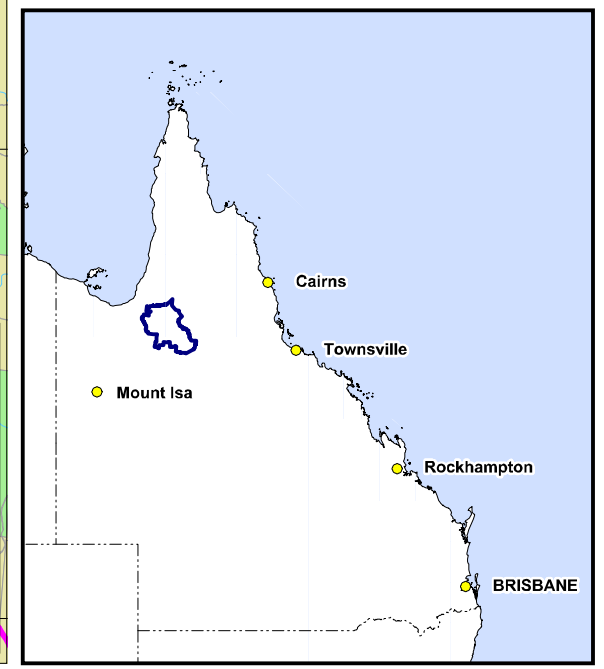
The Registrar, the National Native Title Tribunal and its staff, members and agents and the Commonwealth (collectively the Commonwealth) accept no liability and give no undertakings guarantees or warranties concerning the accuracy, completeness or fitness for purpose of the information provided. In return for you receiving this information you agree to release and indemnify the Commonwealth and third party data suppliers in respect of all claims, expenses, losses, damages and costs arising directly or indirectly from your use of the information and the use of the information you obtained by any third party.



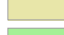
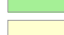
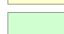



Latitude and Longitude based on Geocentric Datum of Australia 1994 Non Projection



Location Diagram



- Land Tenure**
Freehold and unknown are uncoloured
-  Convertible Lease
 -  Other Lease
 -  Pastoral Lease
 -  Reserve/Park
 -  Unallocated Land
 -  Aboriginal Freehold